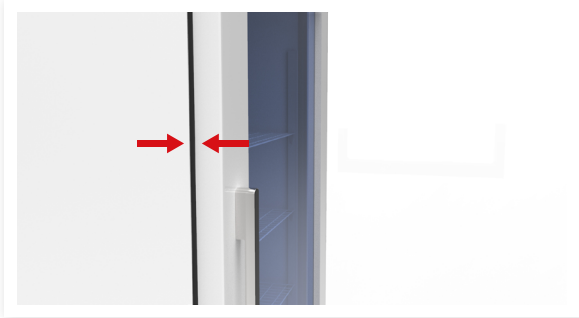




- 1 Determine the width of your refrigerator's seal.

**NOTE:** If your door is more than 0.5mm (0.02 in.) greater than its cabinet side, you will need to add a shim to the lock to bring it within 0.5mm (0.02 in.).



- 2 Thoroughly clean the area where the FridgiGuard will be placed.



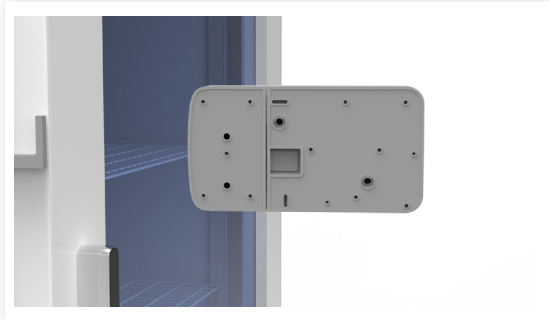
- 3 Place the Installation Jig along refrigerator opening. (Double-sided tape required).



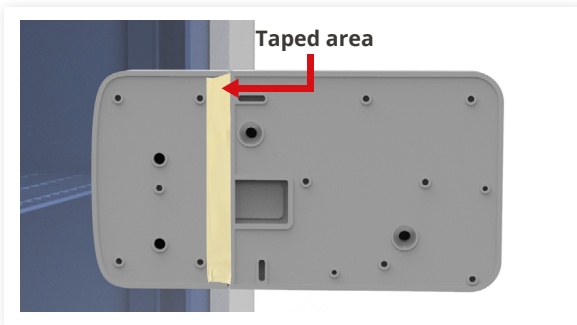
- 4 Remove your FridgiGuard device from its packaging.



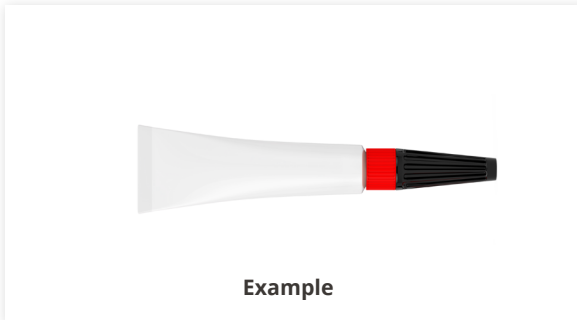
- 5 Before applying adhesive, set aside an area on the catch where lock and catch meet by applying masking tape.



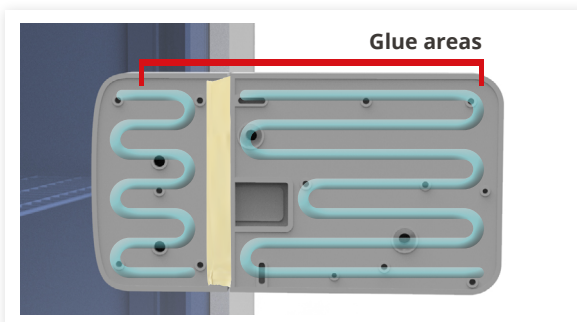
- 6 The catch side's covered length should be the same as your refrigerator's seal minus 1mm (0.04 inch).



- 7 Prepare an industrial-grade adhesive for the back of your FridgiGuard.



- 8 Once you've covered this area, place an even layer of adhesive on the remaining portion of your lock and catch.



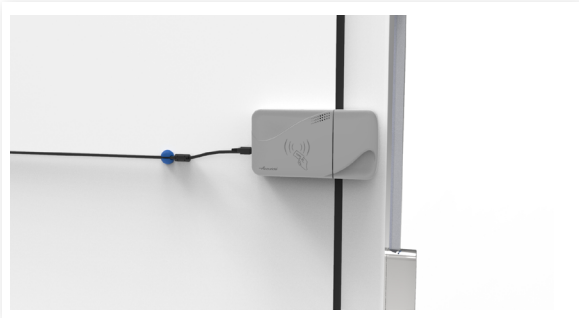
- 9 Place FridgiGuard onto the Installation Jig. Press the firmly on the device and hold per adhesive manufacturer recommendations.



- 10 Once FridgiGuard is secure in place, remove the Installation Jig.



- 11 Connect FridgiGuard to its power supply.



- 12 Your FridgiGuard is ready to be programmed. To learn about authorization, records, and other functions, refer to the [FridgiGuard Software Guide](#).



- 13 Once programmed, unlock the device via keycard and remove any masking tape.



***FRIDGiGUARD™***