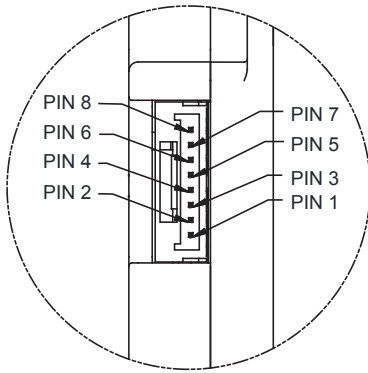
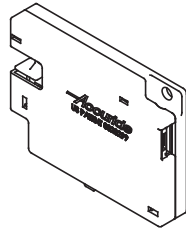


# Power Requirements and Connectors



**SM08B-GHS-TB** (JST lock connector)



**GHR-08V-S** (JST cable connector)

WIRE	COLOR
8	RED
7	GREY
6	GREY
5	GREY
4	GREY
3	GREY
2	GREY
1	GREY

## OEM Cable

- PWR (+) Varies by model\*\*
- PWR (-) Ground
- Trigger : See Note 3
- Jumper connection for TR only
- Drawer Status
- For internal use only, do not use\*
- For internal use only, do not use\*
- Secure Status

## TECHNICAL DATA

### Internal Sensor Specifications

Mechanical Life : 300,000 cycles  
(Drawer Contact "DC")  
(Lock Contact "LC")

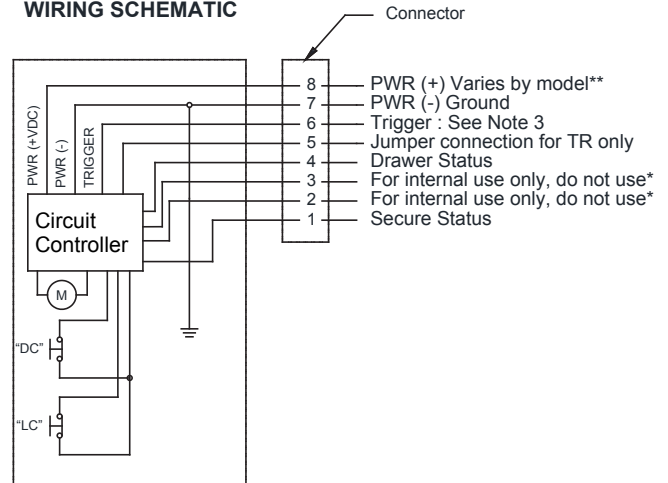
### Notes:

1. Drawer status output:  
Drawer open : = "Open"  
Drawer closed : = "Ground"
2. Secure status output:  
Lock is unsecure : = "Open"  
Lock is secure : = "Ground"
3. To unlock the Electronic Locks:  
Applying the following range at pin 6 will unlock the Electronic Lock until +VDC is removed.

**10EL-38EL-3135EL**      **2 Way - EL :**      **5EL**  
+5 to +24 VDC\*\*      +5 to +24VDC\*\*      +7 to +24VDC\*\*

4. (\*) PIN 2 & 3 ARE FOR INTERNAL USE ONLY.  
DO NOT USE.

## WIRING SCHEMATIC



	10EL - 38EL - 3135EL		2 Way - EL	5EL	
Lock Features	Model B	Model D*	Model B	Model B	Model D*
Power/Voltage	+5 to +24 VDC**	+5 to +24 VDC**	+5 to +24VDC**	+7 to +24VDC**	+7 to +24VDC**
Current Stand By	< 100 Micro Amps	< 100 Micro Amps	~15 Micro Amps	< 50 Micro Amps	< 5 Micro Amps
Typical Current Draw	50mA for 200ms @12VDC	50mA for 200ms @12VDC	125mA for 150ms @12VDC	125mA for 350ms @12VDC	250mA for 325ms @12VDC
Trigger	+ VDC @ Pin 6	+ VDC @ Pin 6	+ VDC @ Pin 6	+ VDC @ Pin 6	+ VDC @ Pin 6
Drawer Status	✓		✓	✓	
Secure Status	✓		✓	✓	
Touch Release	✓	✓			

◆ Model D locks are not compatible with Senseon Plus

**Accuride®**

Accuride International Inc.

12311 Shoemaker Avenue  
Santa Fe Springs, CA 90670

TEL (562) 903-0200

FAX (562) 903-0208

Manufacturing, Engineering, and Sales  
United States • Germany • Japan •  
Mexico • United Kingdom • China



For the most current technical information visit [senseon.com](http://senseon.com)

⚠ WARNING: This product can expose you to chemicals including nickel, which is known to the State of California to cause cancer and birth defects or other reproductive harm. For more information go to [www.P65Warnings.ca.gov](http://www.P65Warnings.ca.gov).

Copyright © 2021 Accuride International Inc. WD-R2-1221